

6:53 PM

ROLLING MEADOWS LIBRARY

Balance Sheet

02/25/21

As of February 28, 2021

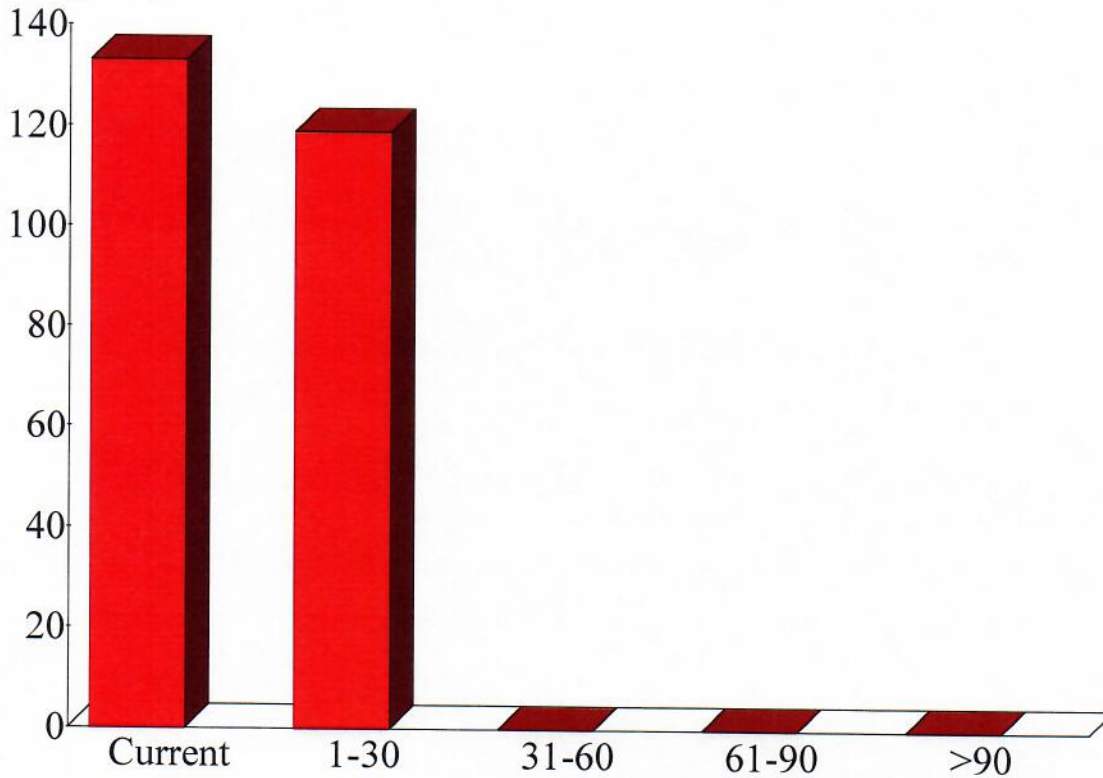
Accrual Basis

	Feb 28, 21
ASSETS	
Current Assets	
Checking/Savings	
1000 Funds	
1010 Administered With City	
1010.01 Savings Account	2,360,329.39
1011 General Operating Checking	505,806.20
1011.02 Gen Fund Allocation	-989,646.31
1013 Capital Proj's Allocation	383,771.37
1014 Wkg Cash Levy Allocation	265,874.94
1014.01 Wkg Csh Bd Desig Alloc	340,000.00
Total 1010 Administered With City	2,866,135.59
1020 Administered By Library	
1021 Petty Cash Checking	7,500.00
1022 On-Site Cash (safe)	522.00
Total 1020 Administered By Library	8,022.00
Total 1000 Funds	2,874,157.59
Total Checking/Savings	2,874,157.59
Total Current Assets	2,874,157.59
TOTAL ASSETS	2,874,157.59
LIABILITIES & EQUITY	
Liabilities	
Current Liabilities	
Accounts Payable	
2100 Accounts Payable	
2110 Administered With City	
2111 General Operating	251,886.23
Total 2110 Administered With City	251,886.23
Total 2100 Accounts Payable	251,886.23
Total Accounts Payable	251,886.23
Total Current Liabilities	251,886.23
Total Liabilities	251,886.23
Equity	
Retained Earnings	2,789,834.17
Net Income	-167,562.81
Total Equity	2,622,271.36
TOTAL LIABILITIES & EQUITY	2,874,157.59

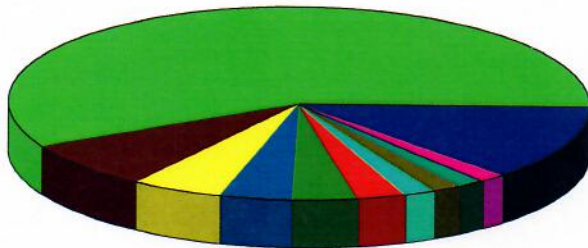
Accounts Payable by Aging Period
As of February 26, 2021

Amount Due

\$ in 1,000's



Accounts Payable by Vendor
As of February 26, 2021



CITY OF R.M.- SALARIES	57.93%
CITY OF R.M. - IMRF	7.82
CITY OF R.M.-HEALTH INSUR.	5.23
CITY OF R.M. - FICA	4.11
PACE SYSTEMS, INC.	3.73
CITY OF R.M. - LIABILITY INS	2.72
BAKER & TAYLOR (L576975)	1.79
BAKER & TAYLOR (L039867)	1.74
PENWORTHY	1.62
CITY OF R.M. - PROF. SERVICE	1.52
Other	11.80
Total	\$251,886.23